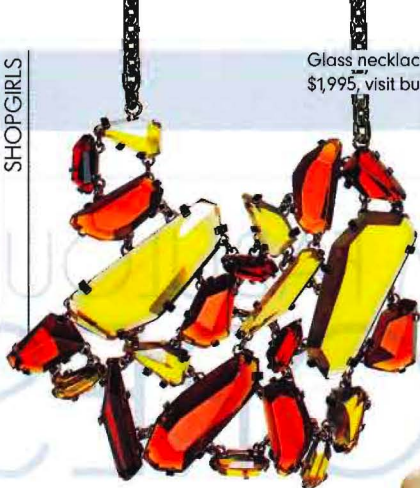


Glass necklace, Burberry,
\$1,995, visit burberry.com



3.1 Phillip Lim

Suede shoe, Miu Miu,
\$550, similar styles at
select Miu Miu Boutique



TAIT'S GREAT
GRANDMOTHER,
CIRCA 1920



Leather shoe,
Gucci, \$1,195,
at select Gucci stores



A MOVIE POSTER FOR
FELLINI'S 8 1/2, 1963



TWO HEARTS

LUCIA TAIT AND
AMANDA SHEPPARD

"I ALWAYS WEAR SUPER-HIGH HEELS.
I JUST CAN'T WEAR FLATS," TAIT SAYS.

Suede and python bag,
Barbara Bui, \$2,865,
at Barbara Bui, NYC



Rodarte



FEMME AU CHAPEAU BY PICASSO,
ONE OF SHEPPARD'S FAVORITE ARTISTS

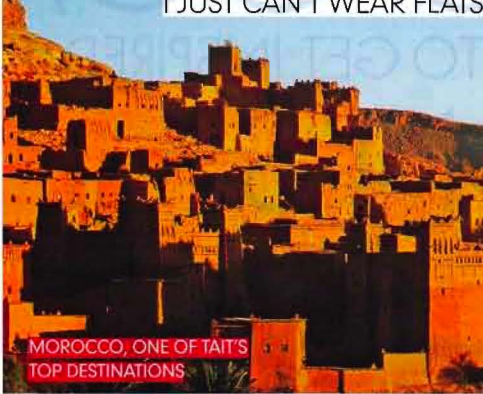
Paolo
Nutini
these streets



"BARBARA BUI HAS AN AMAZING
EUROPEAN ROCK 'N' ROLL AESTHETIC
THAT I LOVE," SHEPPARD SAYS.

AN ALBUM ON
TAIT'S PLAYLIST

MOROCCO, ONE OF TAIT'S
TOP DESTINATIONS



STYLE INSIDERS AMANDA SHEPPARD AND LUCIA TAIT MAKE SHOPPING A LESSON IN ROMANTIC AND ROCKER CHIC

According to Amanda Sheppard and Lucia Tait, where you shop reveals as much about your style as what you wear. "The boutiques you go to say something about the experiences you enjoy, where you travel, and where you live," says Tait, who should know, considering she and Sheppard run Coup de Coeur, a concierge-style shopping service in New York City that helps women find the perfect croc handbag or one-shoulder cocktail dress.

The two met at FIT and started their business last year after realizing how many friends asked for store recommendations. Along the way, they have developed their individual—yet divergent—styles. Sheppard frequents boutiques like Dernier Cri in the Meatpacking District to satisfy her love of vampish,

Brigitte Bardot meets rock 'n' roll looks. And Tait, who prefers sweet West Village shops like Mick Margo, favors luxe, romantic silhouettes reminiscent of Fellini's film *8 1/2*. "I have a photograph in my closet of my great-grandmother wrapped in a great fur coat. It's my daily inspiration for looking polished and put together every day," she says.

This fall, Alabama-bred Sheppard plans to pair a Mike & Chris leather jacket and skinny J Brand jeans with Gucci's studded booties and a statement necklace. "It's hard to wear bangles with a big winter coat, so I'll usually throw on a big necklace, like Burberry's multicolor stone version, that would look great with any casual or dressed-up outfit," she says. Pennsylvania-native Tait plans to snap up maxi-dresses from 3.1 Phillip Lim and shorter versions from Rodarte. "I don't wear a lot of jewelry, but when I do it's usually a Stacey Lapidus headband and armband, or something I bought while traveling abroad," she says. —Nick Burns



LUCIA TAIT (LEFT) AND
AMANDA SHEPPARD